



Portland Fields, Sutton In Ashfield, NG17

£1,160 Per Month

* Rent Free - Limited Time Offer*

For a limited time only, we're offering rent free until 28th February 2025*

This exceptional incentive lets you enjoy significant savings while settling into your dream home.

Location, Travel & Local Community

Welcome to Portland Fields Sutton In Ashfield - a charming semi-detached house that could be your next dream home!

Situated in a peaceful neighbourhood, this house offers a tranquil retreat from the hustle and bustle of everyday life.

Education & SCHOOLS NEARBY

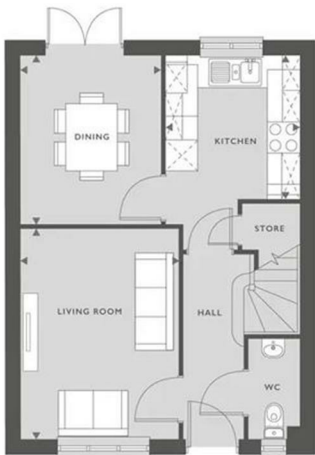
The area provides excellent opportunities for children aged 4-18, with a range of schools ranging from Kindergartens all the way up to Primary schools all within 1.5 miles of the site. Making the school run quick and easy.

About your home - The Cromford



40 Butterworth Road, Sutton-In-Ashfield, NG17 1DF

846 SQFT
79 M²



GROUND FLOOR

KITCHEN	2.56M X 2.76M	8'5" X 9'1"
DINING	2.72M X 3.26M	8'11" X 10'8"
LIVING ROOM	3.04M X 4.03M	10' X 13'3"

FIRST FLOOR

MASTER BEDROOM	2.80M X 4.04M	9'2" X 13'3"
BEDROOM 2	2.80M X 3.26M	9'2" X 10'8"
BEDROOM 3	2.48M X 2.76M	8'2" X 9'1"

■ SVP

